



#### Dimensions

|                         |                 |
|-------------------------|-----------------|
| Product dimensions (mm) | ø110/134 x 190  |
| Packing dimensions (mm) | 227 x 157 x 155 |
| Net weight (g)          | 750             |
| Gross weight (Kg)       | 0,940           |
| Drilling hole (mm)      | Ø104-118        |

#### Product

|                             |                      |
|-----------------------------|----------------------|
| Real power (W)              | 31                   |
| Real luminous flux (Lm)     | 1965/2010/2123       |
| Luminous efficiency (Lm/W)  | 68                   |
| Beam angle (°)              | 10°/25°/50°          |
| Life time (h)               | 50000                |
| IP                          | 20                   |
| Electrical class insulation | Class 1              |
| Operating temperature       | from -20 °C to 35 °C |
| Electrical feeding          | 220..230V, 50/60Hz   |
| Energy efficiency class     | A                    |

## Adjustable circular Luminaire DOWNLIGHT from family BRIM by TROLL.

#### DESCRIPTION

Adjustable round downlight from the TROLL family Brim setting an advanced and innovative thermal balance system through passive dissipation with stable colour temperature of 3000° K (warm white) optimised to be used as general & accent lighting for commercial areas shop-windows and different indoor spaces. Designed for ceiling recessed installation. Luminaire body built in die-cast aluminium finished in white. Luminaire is IP20. Luminaire built-in a primary reflector made of high purity aluminium plus an antiglare secondary reflector with an angle beam of 15°, 25° ó 50°. Luminaire sets a 31 W LED source with CRI higher than 85 % and a chromatic dispersion lower than 3 SMCD. Luminaire sets a ball joint system which allows rotation 355° and tilting 30°. Fixture has a luminous flux of 1965/2010/2123 Lm, with an efficiency of 68 Lm/W and a total consumption of 31 W. The average life for the luminaire is 50000 h (established at a minimum flux of 70 % from the original). Luminaire built-in a DALI dimmable electronic control gear fed at 220-240V; 50/60 Hz.

|                           |   |
|---------------------------|---|
| Item code                 | 11.1223.XXXX.XX   |
| Product type              | IN  |
| Category                  | Recessed Downlights   |
| Family                    | Brim  |
| Subfamily                 | Brim T2   |
| Materials                 | Luminaire body built in die-cast aluminium.   |
| Optical system            | Luminaire built-in a primary reflector made of high purity aluminium plus an antiglare secondary reflector. |
| Installation instructions | Luminaire designed for ceiling recessed installation.   |

#### Pictograms



#### Control gear

|                         |                                       |
|-------------------------|---------------------------------------|
| Control gear included   | Yes                                   |
| Control gear            | DALI Dimmable Electronic Control Gear |
| Factor de potencia      | 0,95                                  |
| Harmonic distortion (%) | < 20                                  |

#### Light source

|                            |       |
|----------------------------|-------|
| Light source included      | Yes   |
| Light source               | Led   |
| Nominal power (W)          | 31    |
| Nominal luminous flux (Lm) | 2800  |
| Average life time (h)      | 50000 |
| Colour temperature (K)     | 3000  |
| Colour consistency (SDCM)  | 3     |
| CRI                        | 80    |

#### Options

Led engine  
1223



11.1223.XXXX.XX

## Reflectors

10 = 10°  
25 = 25°  
50 = 50°



11.■■■■■.■■□□.□□

## Secondary reflector

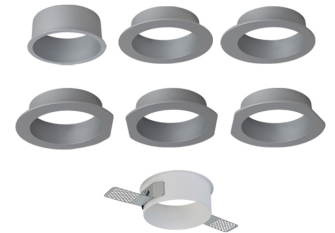
0 = Witout reflector  
1 = Grey  
2 = Golden  
3 = White  
4 = Black  
7 = Bright aluminium



11.■■■■■.■■□□.□□

## Trim

1.02 = Golden basic  
1.04 = Black basic  
1.21 = Grey basic  
1.33 = White basic  
2.33 = White trimless  
3.02 = Golden symmetric  
3.04 = Black symmetric  
3.21 = Grey symmetric  
3.33 = White symmetric  
4.02 = Golden eccentric  
4.04 = Black eccentric  
4.21 = Grey eccentric  
4.33 = White eccentric  
5.02 = Golden Lateral  
5.04 = Black lateral  
5.21 = Grey lateral  
5.33 = White lateral  
6.02 = Golden parallel  
6.04 = Black parallel  
6.21 = Grey parallel  
6.33 = White parallel  
7.02 = Golden angular  
7.04 = Black angular  
7.21 = Black angular  
7.33 = White angular



11.■■■■■.■■■■■.■■■

## Accessories

11.1200.0001.00

Protection glass.

11.1200.0003.00

Anti glare honeycomb.