



#### Dimensions

Product dimensions (mm)	ø110/134 x 190
Packing dimensions (mm)	227 x 157 x 155
Net weight (g)	750
Gross weight (Kg)	0,940
Drilling hole (mm)	Ø104-118

#### Product

Real power (W)	31
Real luminous flux (Lm)	1965/2010/2123
Luminous efficiency (Lm/W)	68
Beam angle (°)	10°/25°/50°
Life time (h)	50000
IP	20
Electrical class insulation	Class 1
Operating temperature	from -20 °C to 35 °C
Electrical feeding	220..230V, 50/60Hz
Energy efficiency class	A

## Adjustable circular Luminaire DOWNLIGHT from family BRIM by TROLL.

#### DESCRIPTION

Adjustable round downlight from the TROLL family Brim setting an advanced and innovative thermal balance system through passive dissipation with stable colour temperature of 2700° K (warm white) optimised to be used as general & accent lighting for commercial areas shop-windows and different indoor spaces. Designed for ceiling recessed installation. Luminaire body built in die-cast aluminium finished in white. Luminaire is IP20. Luminaire built-in a primary reflector made of high purity aluminium plus an antiglare secondary reflector. with an angle beam of 15°, 25° ó 50°. Luminaire sets a 31 W LED source with CRI higher than 85 % and a chromatic dispersion lower than 3 SMCD. Luminaire sets a ball joint system which allows rotation 355° and tilting 30°. Fixture has a luminous flux of 1965/2010/2123 Lm, with an efficiency of 68 Lm/W and a total consumption of 31 W. The average life for the luminaire is 50000 h (established at a minimum flux of 70 % from the original). Luminaire built-in an auxiliary gear ON/OFF fed at 220-240V; 50/60 Hz.

Item code	11.1217.XXXX.XX
Product type	IN
Category	Recessed Downlights
Family	Brim
Subfamily	Brim T2
Materials	Luminaire body built in die-cast aluminium.
Optical system	Luminaire built-in a primary reflector made of high purity aluminium plus an antiglare secondary reflector.
Installation instructions	Luminaire designed for ceiling recessed installation.

#### Pictograms



#### Control gear

Control gear included	Yes
Control gear	Electronic Control Gear
Factor de potencia	0,95
Harmonic distortion (%)	< 20

#### Light source

Light source included	Yes
Light source	Led
Nominal power (W)	31
Nominal luminous flux (Lm)	2800
Average life time (h)	50000
Colour temperature (K)	2700
Colour consistency (SDCM)	3
CRI	80

#### Options

Led engine  
1217



11.1217.XXXX.XX

**Reflectors**

10 = 10°  
 25 = 25°  
 50 = 50°



11.■■■■■.■■□□.□□

**Secondary reflector**

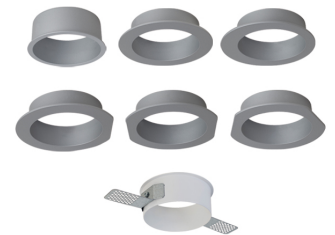
0 = Witout reflector  
 1 = Grey  
 2 = Golden  
 3 = White  
 4 = Black  
 7 = Bright aluminium



11.■■■■■.■■□□.□□

**Trim**

1.02 = Golden basic  
 1.04 = Black basic  
 1.21 = Grey basic  
 1.33 = White basic  
 2.33 = White trimless  
 3.02 = Golden symmetric  
 3.04 = Black symmetric  
 3.21 = Grey symmetric  
 3.33 = White symmetric  
 4.02 = Golden eccentric  
 4.04 = Black eccentric  
 4.21 = Grey eccentric  
 4.33 = White eccentric  
 5.02 = Golden Lateral  
 5.04 = Black lateral  
 5.21 = Grey lateral  
 5.33 = White lateral  
 6.02 = Golden parallel  
 6.04 = Black parallel  
 6.21 = Grey parallel  
 6.33 = White parallel  
 7.02 = Golden angular  
 7.04 = Black angular  
 7.21 = Black angular  
 7.33 = White angular



11.■■■■■.■■■■■.■■■

**Accessories**

11.1200.0001.00

Protection glass.

11.1200.0003.00

Anti glare honeycomb.